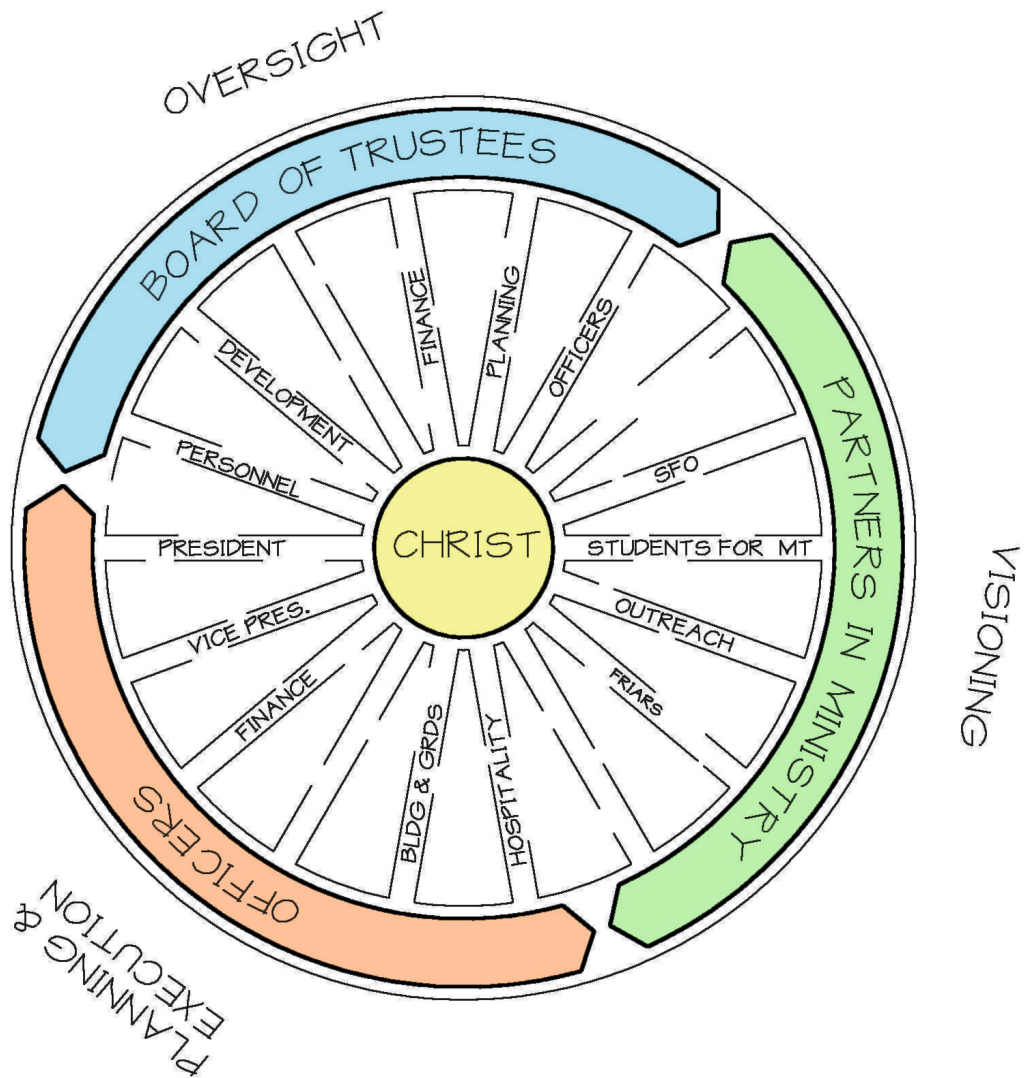


From Mt. Irenaeus fundamentals:



This collaborative and formative model of leadership, a holography that informs any “hierarchy”, shapes and informs the power that we understand we have. It does not come from office or positions, but from the persons we are in Christ, his sisters and brothers, his “new and living stones” for a new Church and world.

We understand that we need to equally and actively build all relationships and that these interactions should be, must be and are constantly moving. For us it is “from God and returning to God”, moving into and through the world, moving through us and moved by us. The energy and power, the principle – the axis and axle – flows out from the One who has sent us out into the world to serve others.