

**Mt. Irenaeus**  
**New Chapel**  
**Entrance Addition**

---





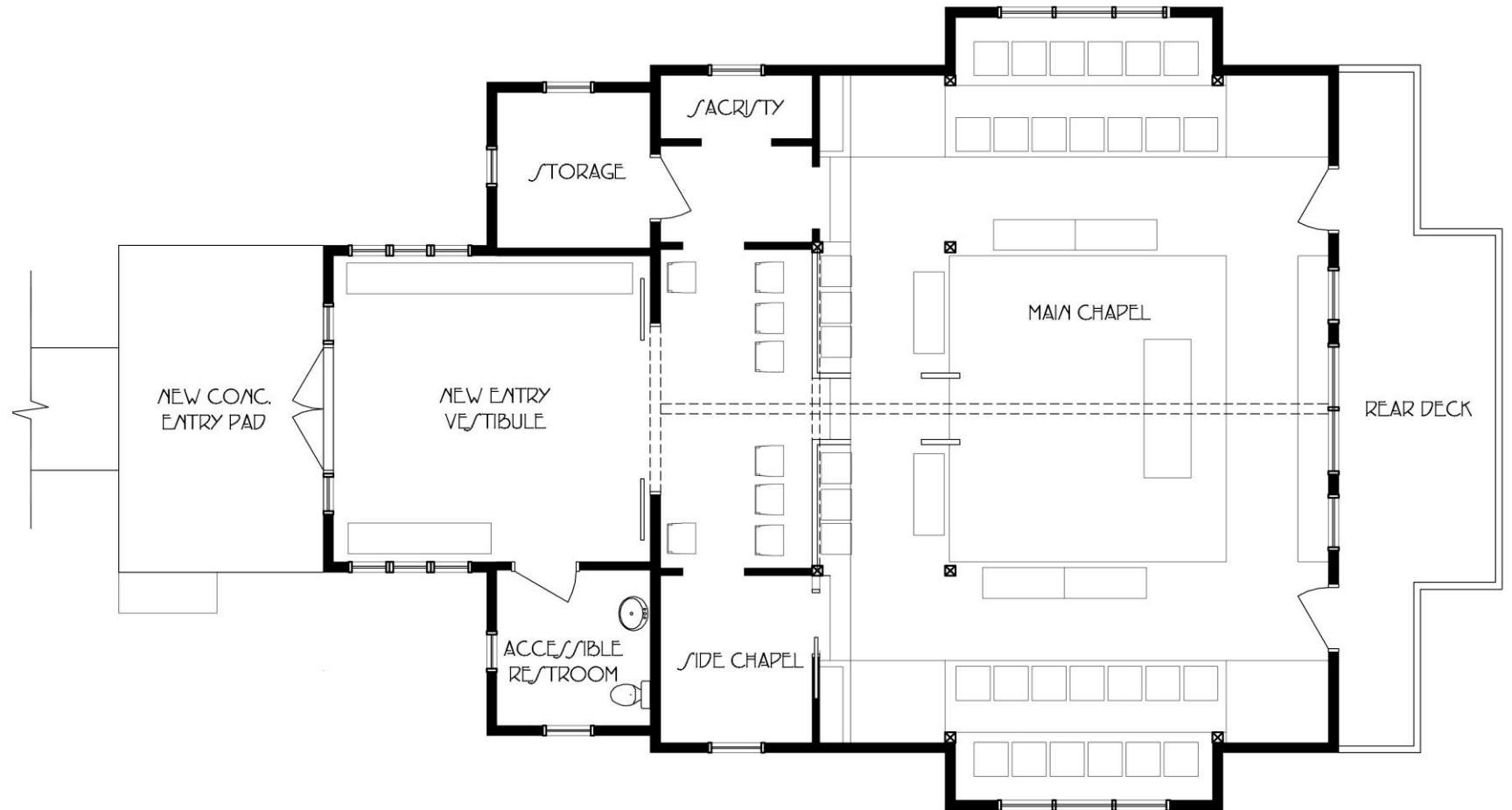
## Project Goals:

- \* Create a welcoming entry that can be used for coats/shoes and an additional small group area
- \* Enhance Accessibility – improved access from the parking lot, new restroom on the main level, accessible seating areas, safe transition between levels



# Floor Plan

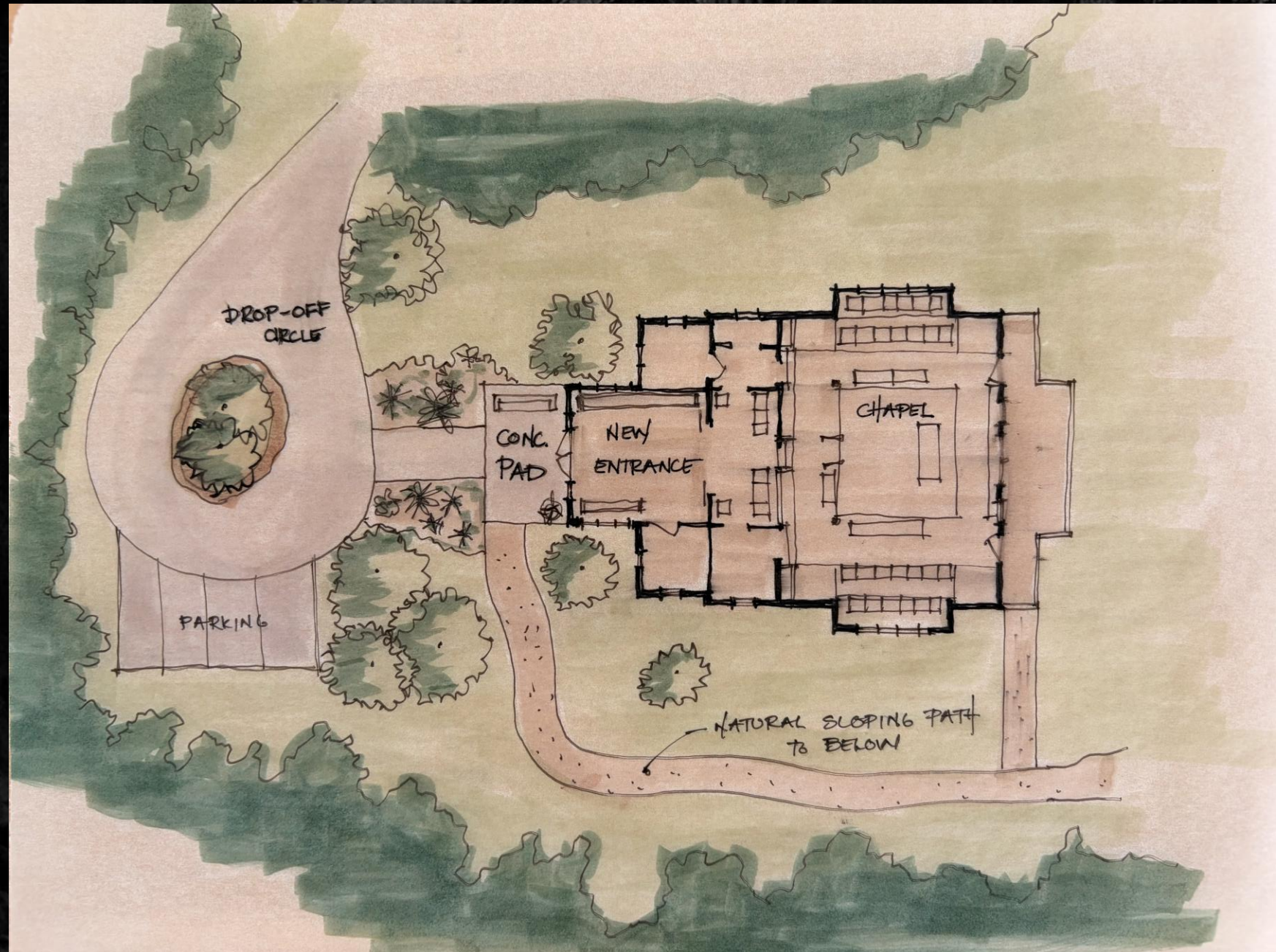
- \* The new 384 SF addition includes a 16' x 16' entry vestibule, a storage area, and accessible restroom.
- \* The current entry doors will be replaced with barn doors crafted from site wood that will allow the new space to connect to the existing main chapel.
- \* Benches crafted from site wood and coat hooks will be placed in the vestibule to allow for easy shoe and coat removal. This space can also be used for small group meetings or break-out sessions.
- \* A new accessible restroom will be connected to the vestibule and allow visitors to now remain fully on the main level during services.



## Site Plan

\* The new entry addition includes a new heated concrete entry pad and connection to the vehicle entry with an entry circle for drop-off and small parking area. This will increase accessible access as well as create ease of winter safety and maintenance.

\* A new path will connect the new concrete pad to the lower level. The path is in the exploratory phase, conversation has centered around having handrails, and the hope for a natural gentle sloping path that would also be easy to maintain and safe in the winter months



# Entry Elevation

\* The entry elevation is designed to work in harmony with the existing nature and aesthetics of the existing chapel. Vertical wood siding and roof shingles will match, and the rooflines allow the semicircle window to be clear for sunlight.

\* New glass doors with sidelites will allow natural light to fill the space and create an entry sequence that pulls a visitor inside and through to the main chapel. A wood cathedral ceiling in the vestibule keeps with the feeling of lifting the eye as a visitor moves through the space into the main chapel. Operable side windows in the vestibule will allow for natural light and ventilation as well in the vestibule.



## Former Entryway Improvements

- \* The existing loft will be opened up by removing the railing and the floorboards. This will create more space in the accessible seating area below and light from the semicircle window.
- \* The existing doors and center wall section will be removed to allow for large barn doors to both separate and connect the space. This also creates more space and flow in the accessible seating area.
- \* The loft railings will be reused in the accessible seating area below to create handrails for steps that wrap around and create seating areas with support. The new railings will also assist with the accessible seating. Handrails will also be installed at the level change and stair below to the main altar.



## Seating & Accessibility Ideas

Discussion for seating options in the main chapel continues. Thoughts center around exploring seating options with back support while also allowing for break-out sessions. Flexibility is also a priority, and exploring seating options that can be easily moved and are non-permanent. Improvements to current bench seating will allow for more comfortable seat depths.





**The new entry way  
addition expands  
the use of the current  
chapel and creates  
a fully accessible  
experience,  
fulfilling the mission  
of all are welcome!**